

Specifications

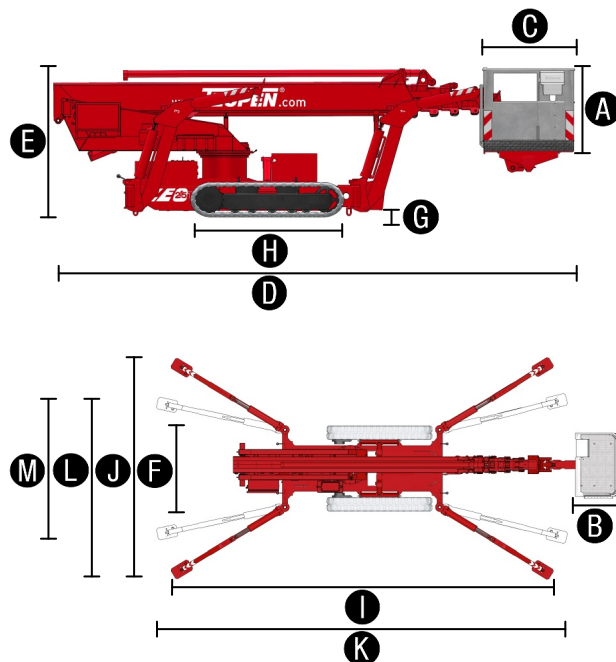


MEASUREMENTS	Metric	US
Working height, max.	25,00 m	82 ft
Horizontal outreach with 80 kg	15,50 m	50 ft 10 in
Horizontal outreach with 200 kg	12,50 m	41 ft
Up and Over Clearance, max.	-	-
Platform height (A)	1,10 m	3 ft 7 in
Platform length (B)	0,80 m	2 ft 8 in
Platform width (C)	1,20 m	3 ft 11 in
Length, overall (D)	7,22 m	23 ft 8 in
Height, travel position (E)	1,98 m	6 ft 6 in
Width, minimal overall width (F)	1,78 m	5 ft 10 in
Max. ground clearance (G)	0,98 m	3 ft 2+ in
Track (L x W) (H)	1,45 m x 0,20 m	4 ft 9 in x 7 7/8 in
Length outrigger footprint standard (I)	5,00 m	16 ft 5 in
Width outrigger footprint standard (J)	4,75 m	15 ft 7 in
Length footprint one side narrow (K)	6,00 m	19 ft 8 in
Width footprint one side narrow (L)	3,89 m	12 ft 9 in
Width footprint both sides narrow (M)	3,03 m	9 ft 11 in
Outrigger plate Ø	0,31 m x 0,22 m	12 in x 8 1/2 in

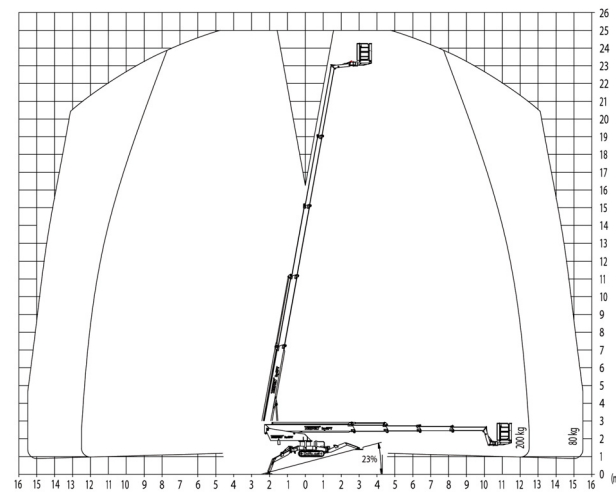
PRODUCTIVITY	Metric	US
Basket capacity	200 kg	441 lbs
Movable Jib	-	-
Basket rotation	180°	180°
Turret rotation	450°	450°
To be jacked up on ground slope of	13,0°/23 %	13.0°/23 %
Height and width track adjustment	20/25 cm	8/10 in
Gradeability max.	16,7°/30 %	16.7°/30 %
Slope angle	16,7°/30 %	16.7°/30 %
Travel speed	3,0 km/h	1.9 mph

WEIGHT	Metric	US
Total weight	2980 kg	6,570 lbs
Live load in travelling position	2,27 kN/m ²	47.4 psf
Live load in working position	1,54 kN/m ²	38.2 psf
Max. point load per outrigger plate	21,8 kN	4901 lbf

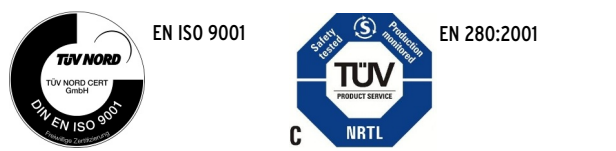
POWER		
Standard power sources (Electric & combustion engine)	1) Diesel: Kubota D 722-E (14.1 kW, 20.3 hp) 2) Electric motor: 115 V (US), 230 V (EU)	
Optional power sources	1) Battery: 80 V Battery drive	
Fuel tank capacity Diesel engine	13,0 l	3.4 gal



WORKING ENVELOPE



STANDARDS COMPLIANCE



Product specifications are subject to change without notice or obligation. Photographs and drawings in this document are for illustrative purposes only. Refer to the appropriate Operator's Manual for instructions on the proper use of this equipment. Failure to follow the appropriate Operator's Manual when using our equipment or to otherwise act irresponsibly may result in serious injury or death. The only warranty applicable to our equipment is the standard written warranty applicable to the particular product and sale and we make no other warranty, expressed or implied. Products and services listed may be trademarks, service marks or trade-names of Teupen Maschinenbau GmbH and/or its subsidiaries in the U.S.A. and many other countries. "Teupen", "Access redefined" and "LEO Series" are registered Trademarks of Teupen GmbH in the United States of America and many other countries. Version 2013-A © 2013 Teupen Maschinenbau GmbH.